

PK 28.502 TEC 5 | PK 30.002 TEC 7

**HIGH-TECH
CRANES IN THE 30
METRE TONNE CLASS**

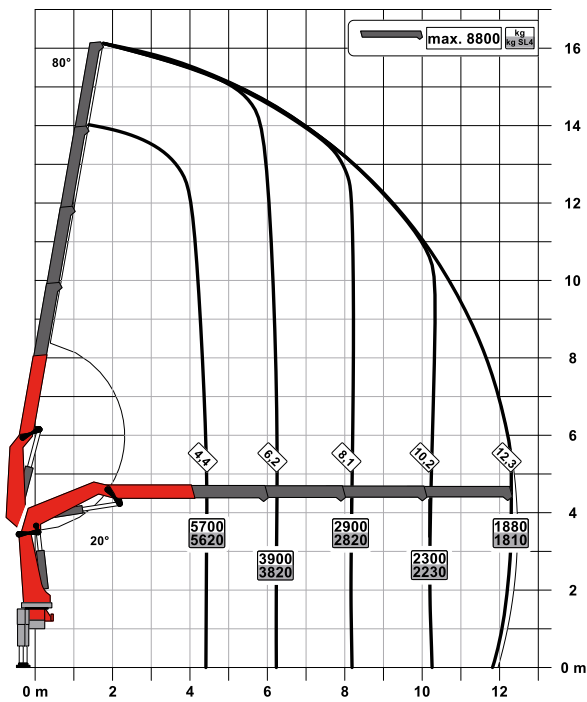
LIFETIME EXCELLENCE



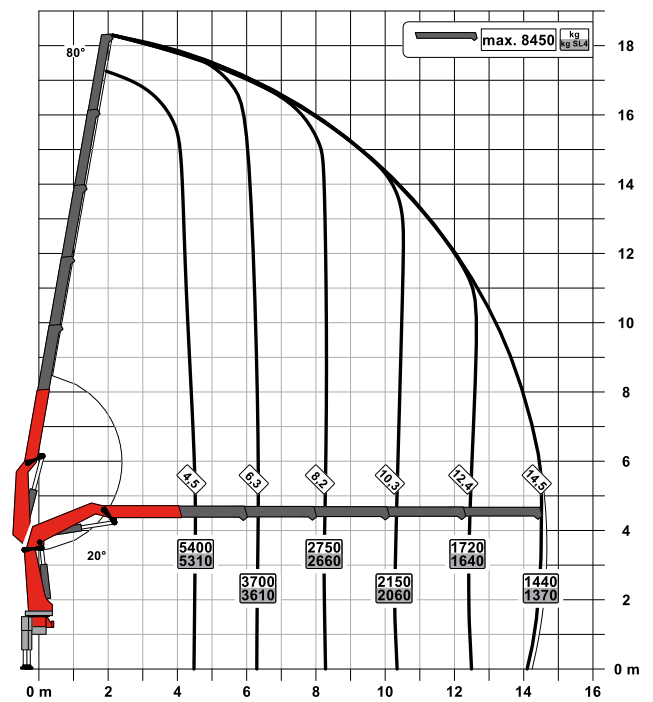
PK 28.502 TEC 5

PERFECT DIMENSIONS

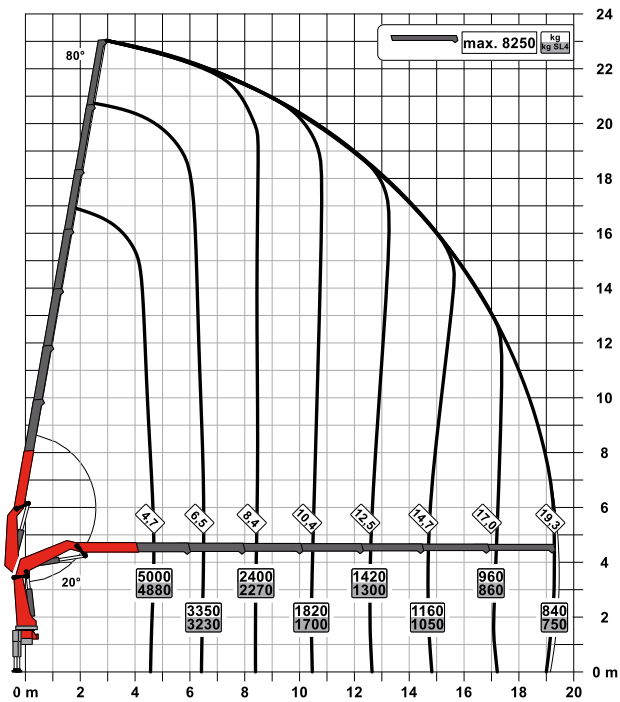
C



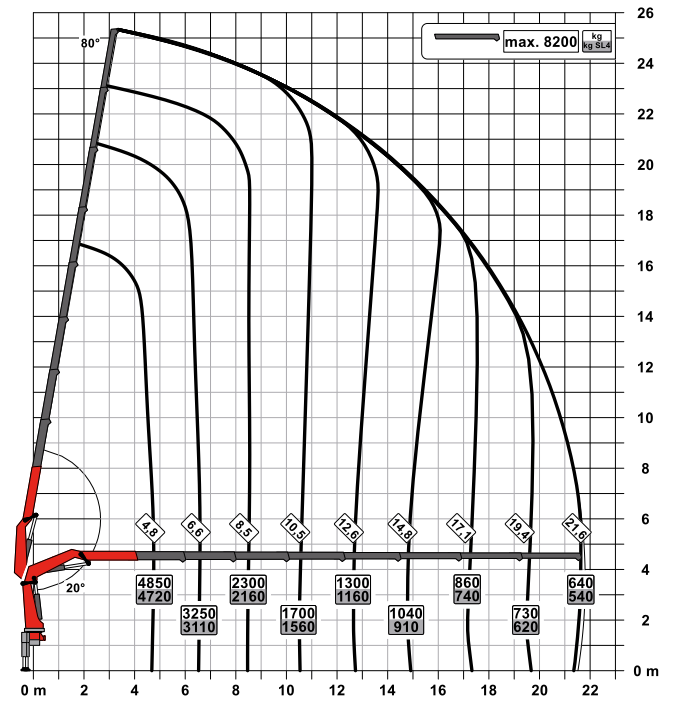
D



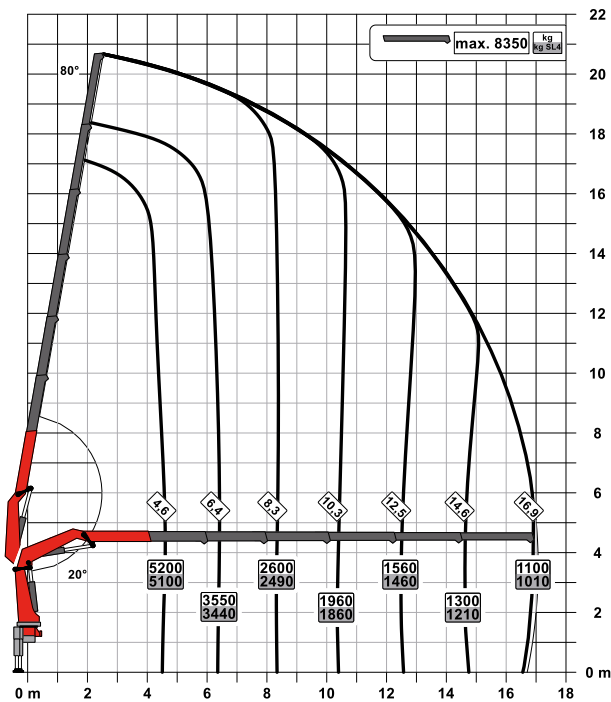
F



G



E



Technical specifications EN 12999 HC1 HD4/S2

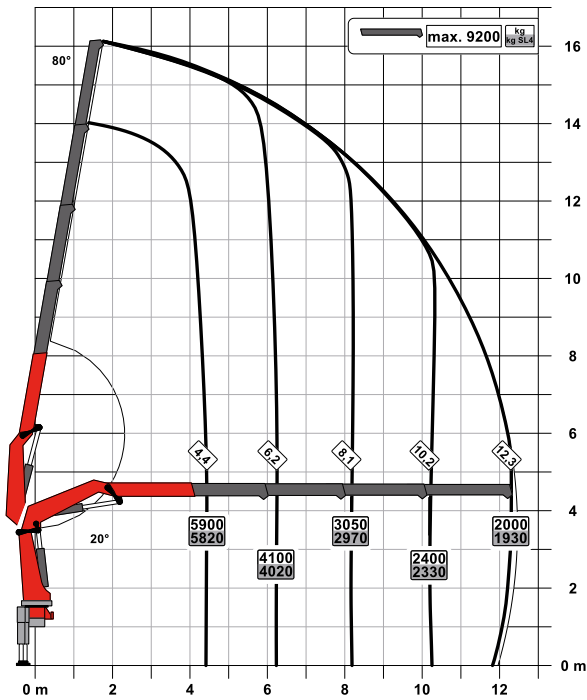
Max. lifting moment	26.8 mt/263.0 kNm	193,960 ft.lb
Max. lifting capacity	10000 kg/98.1 kN	22050 lb
Max. hydraulic outreach	21.8 m	71' 6"
Max. outreach (with fly jib)	29.9 m	98' 1"
Slewing angle	endless	
Slewing torque	2.7 mt/26.5 kNm	19,540 ft.lb
Outreach	8.1 m	26' 7"
Stabiliser spread	5.6 m	18' 4"
Fitting space required (std.)	1.13 m	3' 8"
Width folded	2.55 m	8' 4"
Max. operating pressure	370 bar	5,365 psi
Recommended pump capacity	from 90 l/min to 110 l/min	23.8 US gpm 29.1 US gpm
Dead weight (std.)	2860 kg	6,305 lb

TEC 5

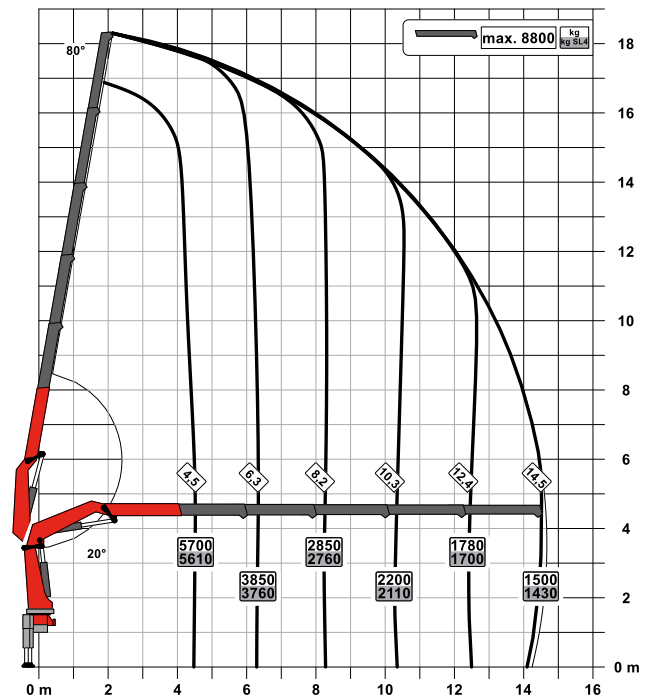
- Power Link Plus
- Paltronic
- S-HPLS
- Scanreco P3
- Soft Stop
- Optional:
 - HPSC-Plus LOAD
 - AOS
 - SRC
 - PJ075 with DPS-P
 - PJ090 with DPS-P
 - Rope Winch 2.5 t

PERFECT DIMENSIONS

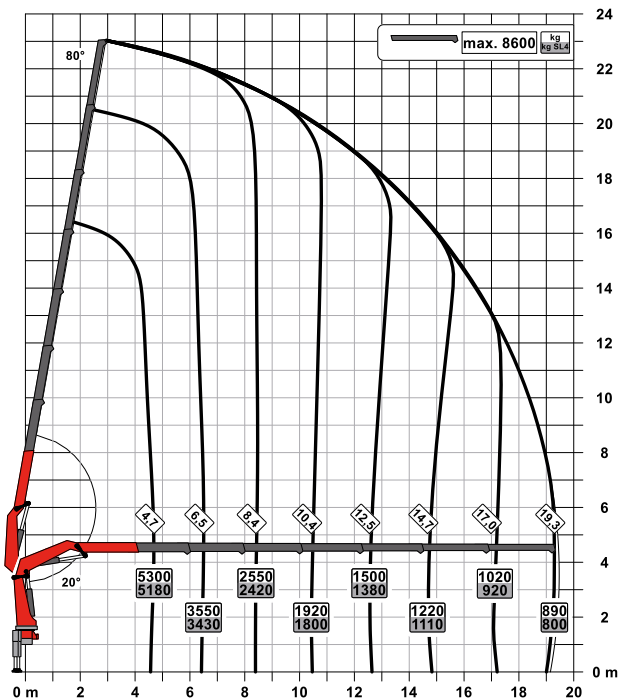
C



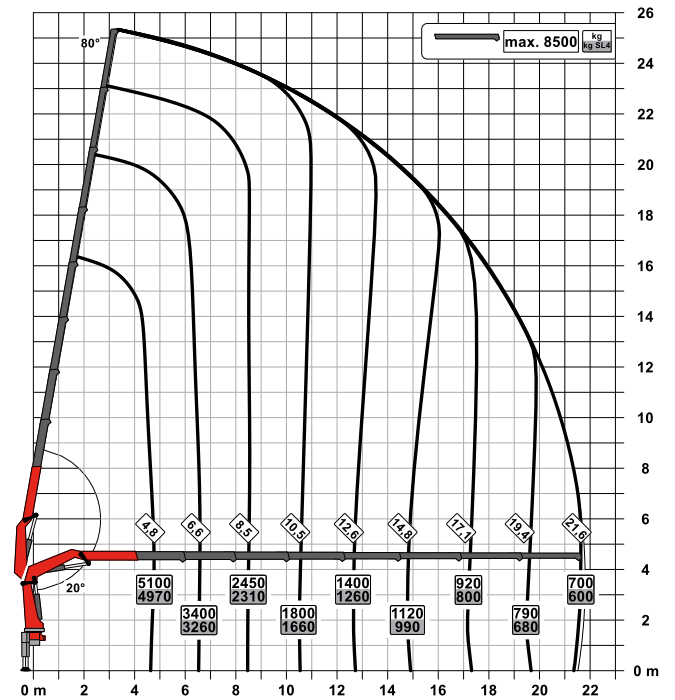
D

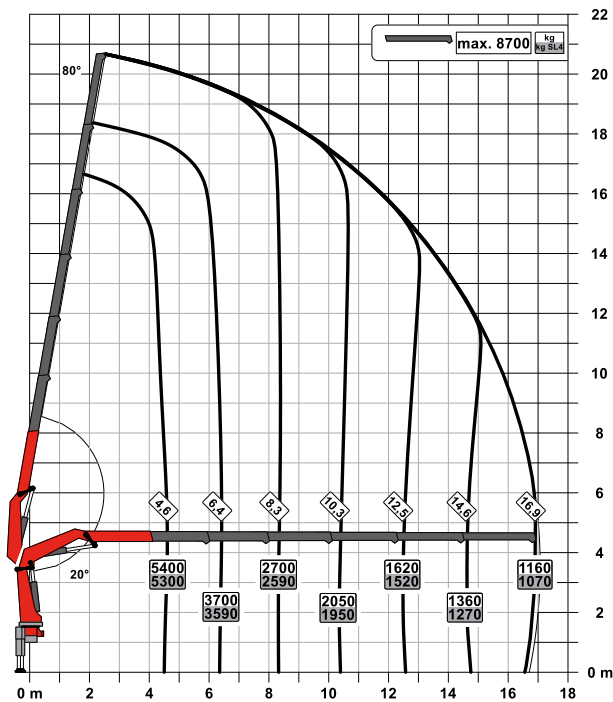


F



G



E

Technical specifications

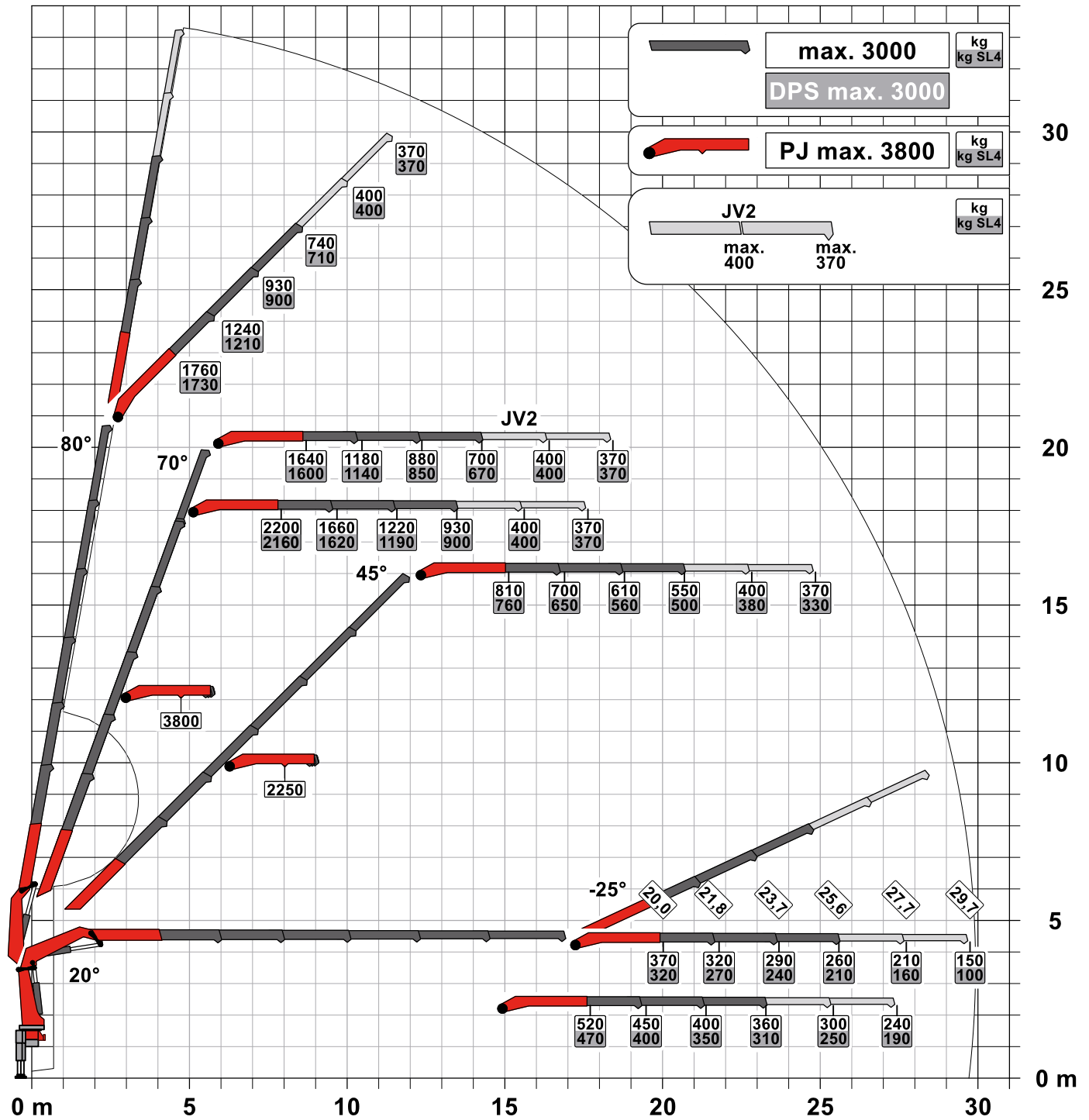
EN 12999 HC1 HD5/S2

Max. lifting moment	28.1 mt/275.5 kNm	203,180 ft.lb
Max. lifting capacity	10000 kg/98.1 kN	22050 lb
Max. hydraulic outreach	21.8 m	71' 6"
Max. outreach (with fly jib)	29.9 m	98' 1"
Slewing angle	endless	
Slewing torque	2.7 mt/26.5 kNm	19,540 ft.lb
Outreach	8.1 m	26' 7"
Stabiliser spread	5.6 m	18' 4"
Fitting space required (std.)	1.13 m	3' 8"
Width folded	2.55 m	8' 4"
Max. operating pressure	385 bar	5,585 psi
Recommended pump capacity	from 90 l/min to 110 l/min	23.8 US gpm 29.1 US gpm
Dead weight (std.)	2860 kg	6,305 lb

TEC 7

- Power Link Plus
- Paltronic
- S-HPLS
- PALcom P7
- Soft Stop
- Optional:
 - HPSC-Plus LOAD / GEOM / FSTAB
 - P-Fold
 - AOS
 - RTC
 - SRC
 - PJ075 with DPS-C
 - PJ090 with DPS-C
 - Rope Winch 2.5 t

PERFECT DIMENSIONS



FIRST-RATE IN DESIGN AND PERFORMANCE

6 Highlights



P-Profil
Rigid and light

The polygonal or drop-shaped P-Profile is especially rigid and simultaneously light weight design perfection.



P-FOLD*
Perfect set-up by fingertip control

The new assistance system makes folding and unfolding an easy job for the crane operator. This significantly increases operator comfort and prevents costly damage.



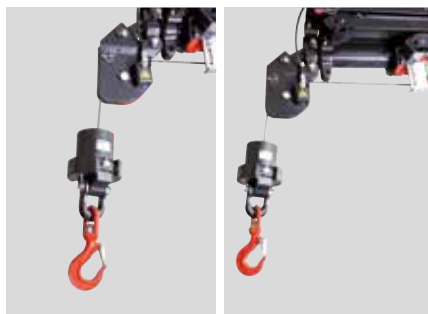
HPSC-Plus*
Maximum utilization of the working range

The modular system HPSC-Plus offers three modules expanding HPSC. Thanks to load detection, length measurement system or stabilizer force detection, lifting capacity can be maximized.



DPS-Plus / DPS-C*
More efficient fly jib operation

The Dual Power System allows multiple uses of the crane both for large outreaches as well as for heavy load operation.



SRC and RTC*
More comfort in rope winch operation

SRC (Synchronised Rope Control) maintains a constant distance between the pulley head and the hook block, while RTC (Rope Tension Control) is automatically controlling the rope tension. Two systems, which are particularly valuable in terms of operator friendliness and efficiency of operations.



MEXT and WEIGH*
Systems for easy handling

MEXT includes mechanical extensions into the overload protection while WEIGH allows to weigh loads. The result: lower effort for the operator in daily working tasks.

KP-PK30/28502M1+EN

Cranes shown in the leaflet are partially optional equipped and do not always correspond to the standard version. Country-specific regulations must be observed. Dimensions may vary. Subject to technical changes, errors and translation mistakes.